

Detection of Wrong Orientation of Blister in wallet

Customer

Recognized as a leading manufacturer of complex oral and injectable cephalosporins.

Customer Requirements

In wallet packing machine, an ALU-PVC blister is inserted in to a cardboard wallet. Customer required a vision system which is capable of detecting wrong orientation of blister in wallet.

Why EPSILON

Customer had a system that checks multiple parameters of tablets, but customer needs to remove wrong oriented wallets immediately from the production line before further inspections of wallet. Hence EPSILON.

Challenges

- Date code and batch code is embossed on aluminium foil
- Embossing is not uniform at all time

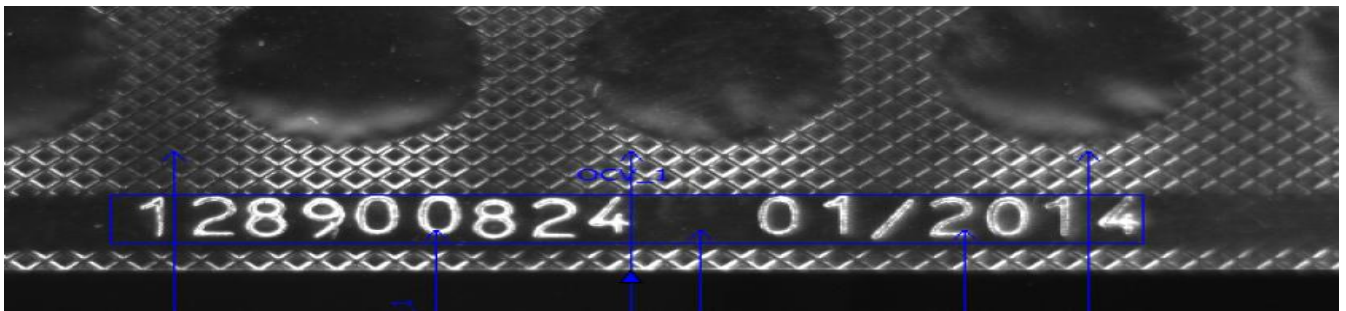


Image after using diffused Infrared light

EPSILON Solution

Epsilon has provided banner camera with lens, mounting arrangement that hold camera and 2 bar lights. Bar lights are mounted such a way that though the wallet tilt it will not affect to the result.

Mounting design for customer



Customer Benefits

- Wrong oriented product is detected before further inspections
- Easy to make program for new product
- Less area consumption
- Integrated display, no need to program from PC

Learn more

Visit www.epsilonfiberoptics.com for more application information